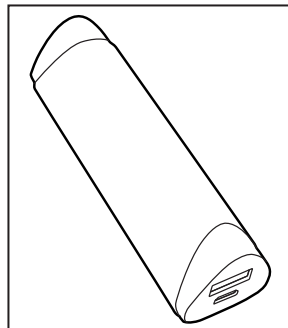


**TECHLINK™**

**Product Name: RECHARGE 2600**  
**Art number: 527011/12/13/14**



**Warranty information**

All Recharge devices are covered by a One (1) year warranty against the defects or fault from the date of the original purchase. Please retain your receipt as proof of purchase. This does not affect your statutory rights. The warranty does not cover:

- 1) misuse or abuse of this product,
- 2) operation outside of directed use or
- 3) unauthorized service or modification.

Please contact Techlink to obtain service, repair or refund under warranty.

**Legal**

The Recharge devices are certified to ETL, FCC, CE, RoHS, WEEE and MFi standards and regulations where required. Please contact Techlink for further information.

Every effort has been made to provide accurate and complete information in this manual, no liability will be made for errors and/or omissions made. Techlink reserves the right to make changes and improvement to all capacities of the Recharge device including: specifications, features, hardware and firmware of the product described in this manual without prior notice.

©2013 by Techlink. All rights reserved. Techlink and Recharge marks are owned by Techlink and may be registered. All other marks are the property of their respective owners.

**TECHLINK , A Division Of Tapehand Ltd.**  
Units 7 and 8 Bat and Ball Enterprise Centre  
Bat and Ball Road  
Sevenoaks  
Kent  
United Kingdom  
TN14 5LJ



**(UK) Free Phone 0800 634 2699**

**(US) Toll Free (844) 499-1159**

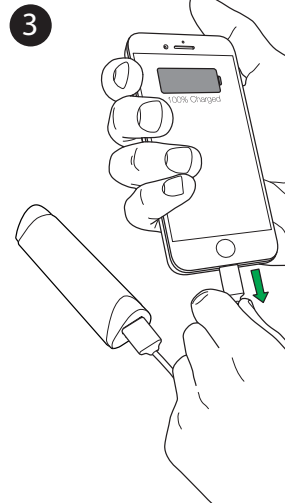
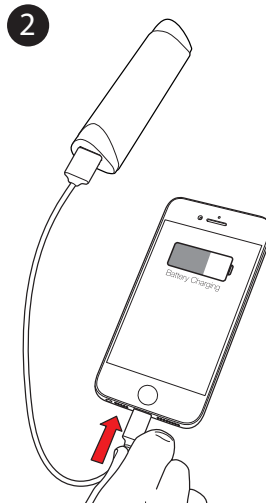
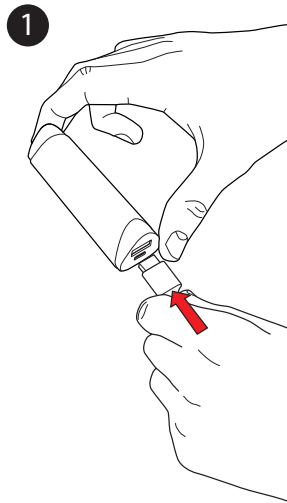


**salesdesk@techlink.uk.com**

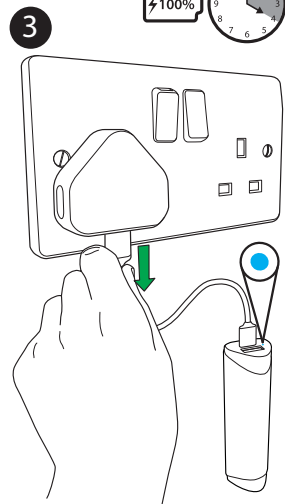
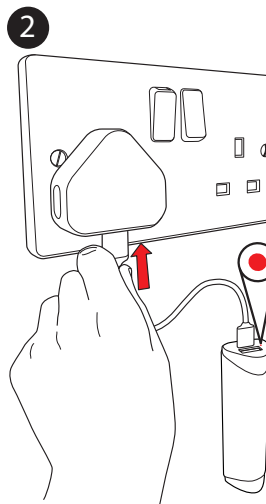
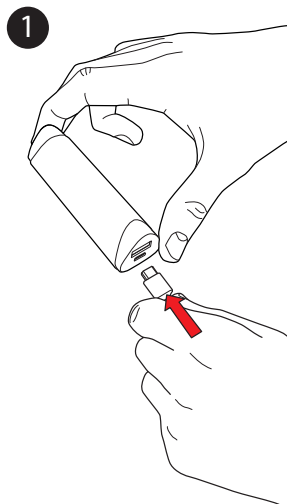


**www.techlink.uk.com**  
**www.recharge.uk.com**

**Recharge your device**



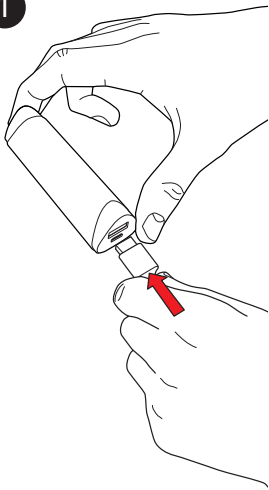
**Recharge the Recharge (UK)**



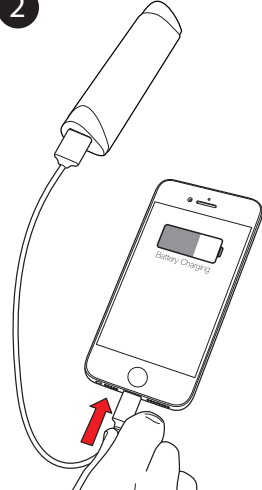
Instructions

## Recharge your device

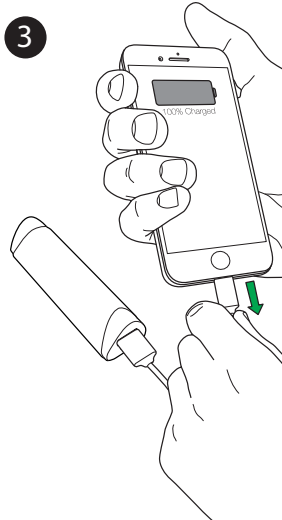
1



2

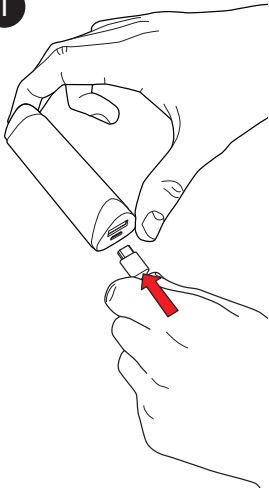


3

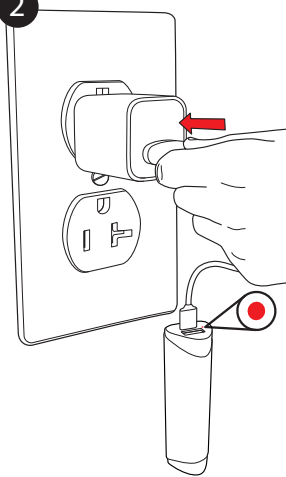


## Recharge the Recharge (USA)

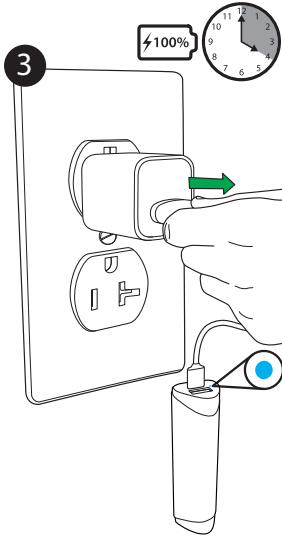
1



2



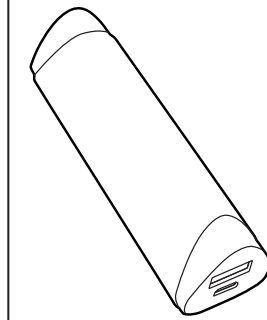
3



**TECHLINK™**

Product Name: RECHARGE 2600

Art number: 527011/12/13/14



### Warranty information

All Recharge devices are covered by a One (1) year warranty against the defects or fault from the date of the original purchase. Please retain your receipt as proof of purchase. This does not affect your statutory rights. The warranty does not cover :

- 1) misuse or abuse of this product,
  - 2) operation outside of directed use or
  - 3) unauthorized service or modification.
- Please contact Techlink to obtain service, repair or refund under warranty.

### Legal

The Recharge devices are certified to ETL, FCC, CE, RoHS, WEEE and MFi standards and regulations where required. Please contact Techlink for further information.

Every effort has been made to provide accurate and complete information in this manual, no liability will be made for errors and/or omissions made. Techlink reserves the right to make changes and improvement to all capacities of the Recharge device including: specifications, features, hardware and firmware of the product described in this manual without prior notice.

©2013 by Techlink. All rights reserved. Techlink and Recharge marks are owned by Techlink and may be registered. All other marks are the property of their respective owners.

**TECHLINK , A Division Of Tapehand Ltd.**  
Units 7 and 8 Bat and Ball Enterprise Centre  
Bat and Ball Road  
Sevenoaks  
Kent  
United Kingdom  
TN14 5LJ



(UK) Free Phone 0800 634 2699

(US) Toll Free (844) 499-1159



salesdesk@techlink.uk.com

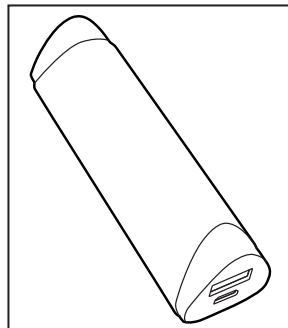


www.techlink.uk.com  
www.recharge.uk.com

Instructions

**TECHLINK™**

**Product Name: RECHARGE 2600**  
**Art number: 527011/12/13/14**



**Warranty information**

All Recharge devices are covered by a One (1) year warranty against the defects or fault from the date of the original purchase. Please retain your receipt as proof of purchase. This does not affect your statutory rights. The warranty does not cover:

- 1) misuse or abuse of this product,
- 2) operation outside of directed use or
- 3) unauthorized service or modification.

Please contact Techlink to obtain service, repair or refund under warranty.

**Legal**

The Recharge devices are certified to ETL, FCC, CE, RoHS, WEEE and MFi standards and regulations where required. Please contact Techlink for further information.

Every effort has been made to provide accurate and complete information in this manual, no liability will be made for errors and/or omissions made. Techlink reserves the right to make changes and improvement to all capacities of the Recharge device including: specifications, features, hardware and firmware of the product described in this manual without prior notice.

©2013 by Techlink. All rights reserved. Techlink and Recharge marks are owned by Techlink and may be registered. All other marks are the property of their respective owners.

**TECHLINK , A Division Of Tapehand Ltd.**  
Units 7 and 8 Bat and Ball Enterprise Centre  
Bat and Ball Road  
Sevenoaks  
Kent  
United Kingdom  
TN14 5LJ



**(UK) Free Phone 0800 634 2699**  
**(US) Toll Free (844) 499-1159**

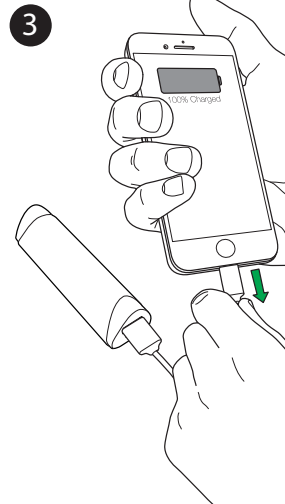
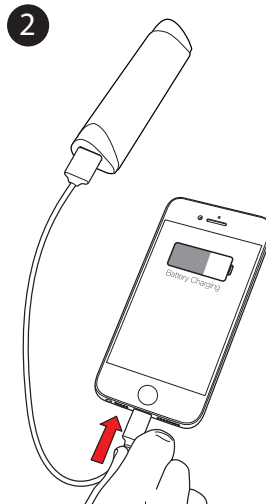
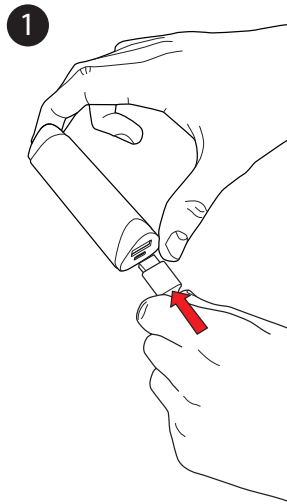


**salesdesk@techlink.uk.com**

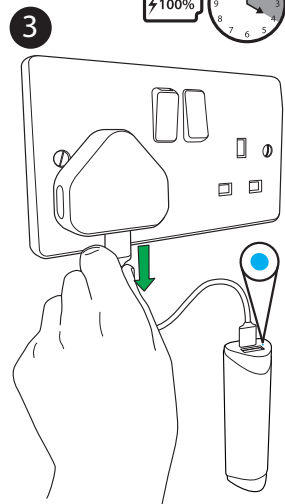
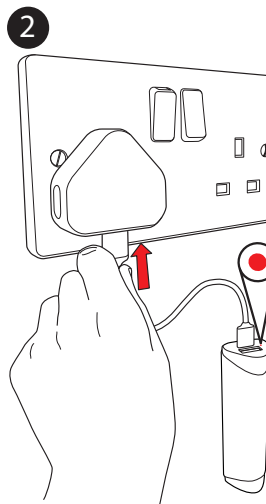
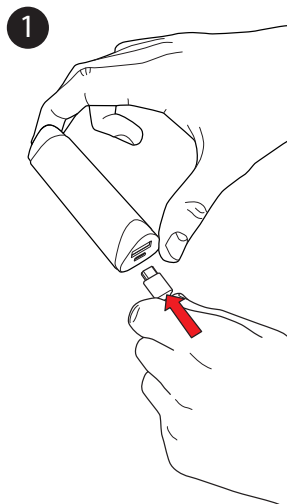


**www.techlink.uk.com**  
**www.recharge.uk.com**

**Recharge your device**



**Recharge the Recharge (UK)**

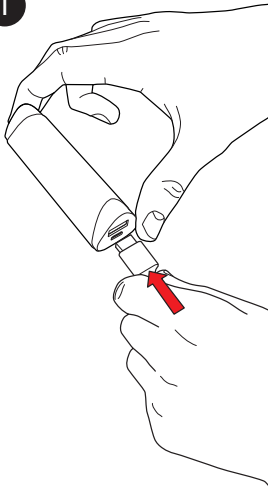


Instructions

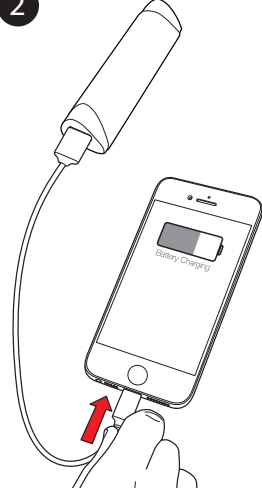


## Recharge your device

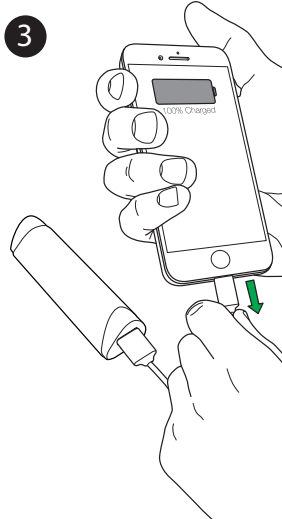
1



2

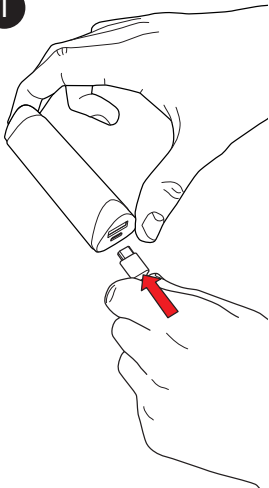


3

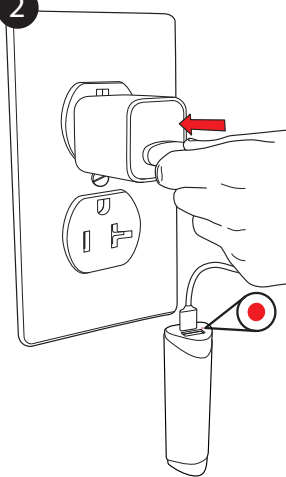


## Recharge the Recharge (USA)

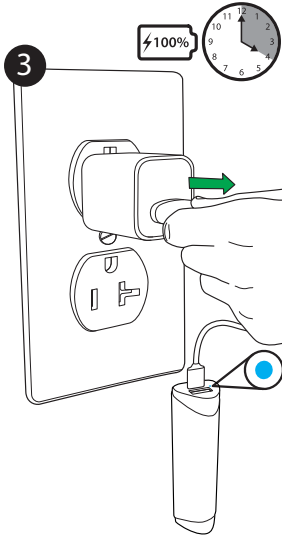
1



2

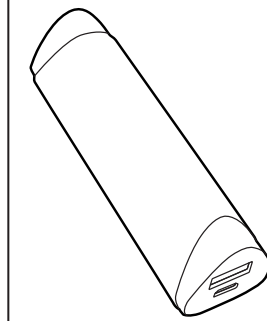


3



**TECHLINK™**

Product Name: RECHARGE 2600  
Art number: 527011/12/13/14



### Warranty information

All Recharge devices are covered by a One (1) year warranty against the defects or fault from the date of the original purchase. Please retain your receipt as proof of purchase. This does not affect your statutory rights. The warranty does not cover :  
1) misuse or abuse of this product,  
2) operation outside of directed use or  
3) unauthorized service or modification.  
Please contact Techlink to obtain service, repair or refund under warranty.

### Legal

The Recharge devices are certified to ETL, FCC, CE, RoHS, WEEE and MFi standards and regulations where required. Please contact Techlink for further information.

Every effort has been made to provide accurate and complete information in this manual, no liability will be made for errors and/or omissions made. Techlink reserves the right to make changes and improvement to all capacities of the Recharge device including: specifications, features, hardware and firmware of the product described in this manual without prior notice.

©2013 by Techlink. All rights reserved. Techlink and Recharge marks are owned by Techlink and may be registered. All other marks are the property of their respective owners.

**TECHLINK , A Division Of Tapehand Ltd.**  
Units 7 and 8 Bat and Ball Enterprise Centre  
Bat and Ball Road  
Sevenoaks  
Kent  
United Kingdom  
TN14 5LJ



(UK) Free Phone 0800 634 2699  
(US) Toll Free (844) 499-1159



[salesdesk@techlink.uk.com](mailto:salesdesk@techlink.uk.com)

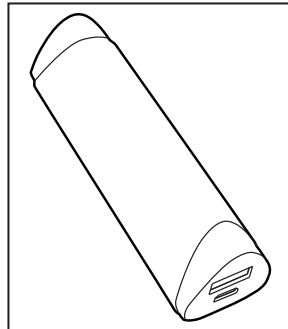


[www.techlink.uk.com](http://www.techlink.uk.com)  
[www.recharge.uk.com](http://www.recharge.uk.com)

Instructions

**TECHLINK™**

**Product Name: RECHARGE 2600**  
**Art number: 527011/12/13/14**



**Warranty information**

All Recharge devices are covered by a One (1) year warranty against the defects or fault from the date of the original purchase. Please retain your receipt as proof of purchase. This does not affect your statutory rights. The warranty does not cover:

- 1) misuse or abuse of this product,
- 2) operation outside of directed use or
- 3) unauthorized service or modification.

Please contact Techlink to obtain service, repair or refund under warranty.

**Legal**

The Recharge devices are certified to ETL, FCC, CE, RoHS, WEEE and MFi standards and regulations where required. Please contact Techlink for further information.

Every effort has been made to provide accurate and complete information in this manual, no liability will be made for errors and/or omissions made. Techlink reserves the right to make changes and improvement to all capacities of the Recharge device including: specifications, features, hardware and firmware of the product described in this manual without prior notice.

©2013 by Techlink. All rights reserved. Techlink and Recharge marks are owned by Techlink and may be registered. All other marks are the property of their respective owners.

**TECHLINK , A Division Of Tapehand Ltd.**  
Units 7 and 8 Bat and Ball Enterprise Centre  
Bat and Ball Road  
Sevenoaks  
Kent  
United Kingdom  
TN14 5LJ



**(UK) Free Phone 0800 634 2699**

**(US) Toll Free (844) 499-1159**



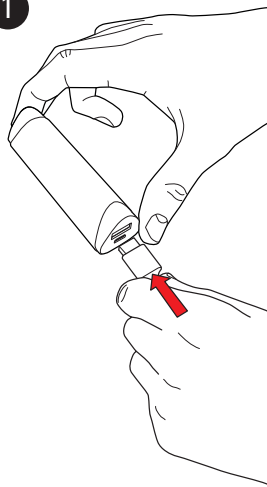
**salesdesk@techlink.uk.com**



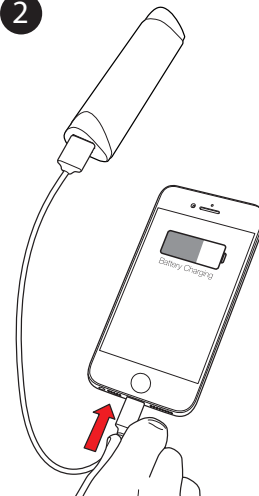
**www.techlink.uk.com**  
**www.recharge.uk.com**

**Recharge your device**

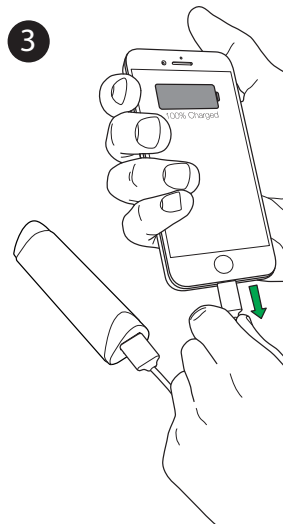
**1**



**2**

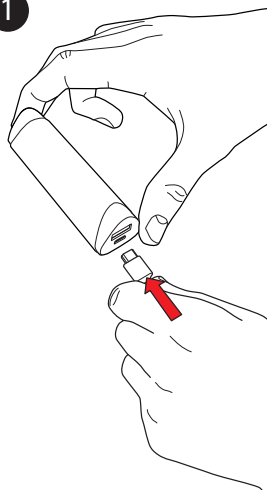


**3**

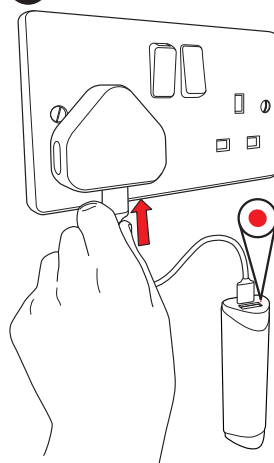


**Recharge the Recharge (UK)**

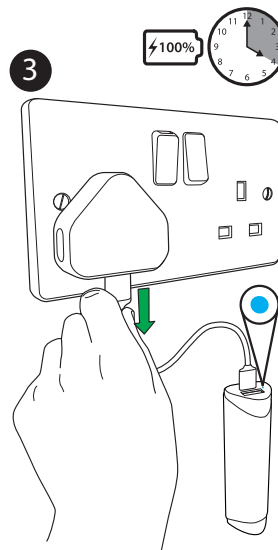
**1**



**2**



**3**

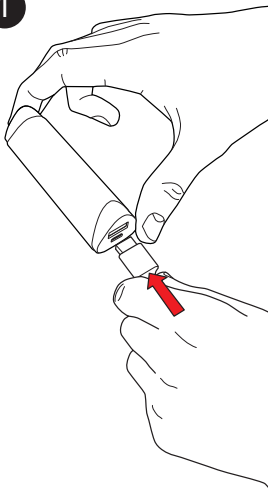


Instructions

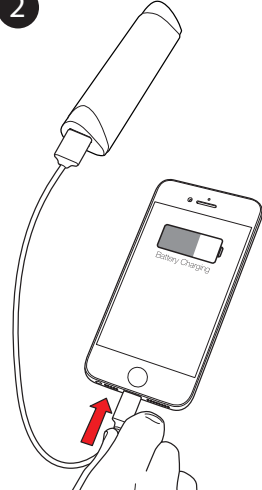


## Recharge your device

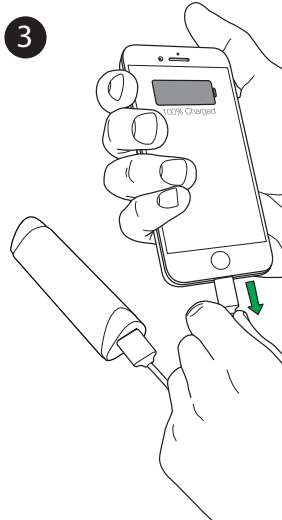
1



2

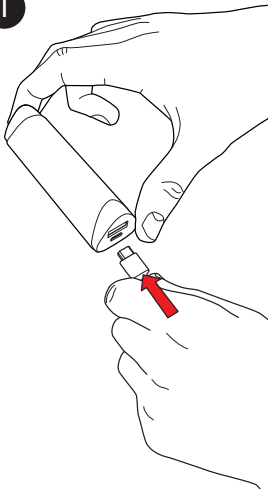


3

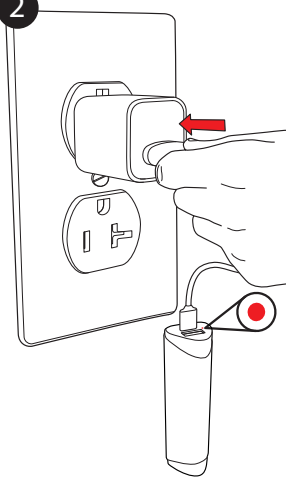


## Recharge the Recharge (USA)

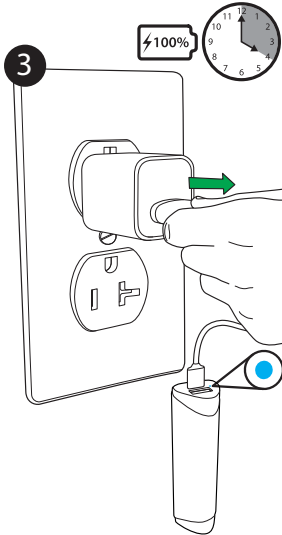
1



2



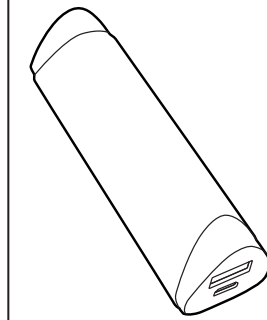
3



**TECHLINK™**

**Product Name: RECHARGE 2600**

**Art number: 527011/12/13/14**



### Warranty information

All Recharge devices are covered by a One (1) year warranty against the defects or fault from the date of the original purchase. Please retain your receipt as proof of purchase. This does not affect your statutory rights. The warranty does not cover :

- 1) misuse or abuse of this product,
  - 2) operation outside of directed use or
  - 3) unauthorized service or modification.
- Please contact Techlink to obtain service, repair or refund under warranty.

### Legal

The Recharge devices are certified to ETL, FCC, CE, RoHS, WEEE and MFi standards and regulations where required. Please contact Techlink for further information.

Every effort has been made to provide accurate and complete information in this manual, no liability will be made for errors and/or omissions made. Techlink reserves the right to make changes and improvement to all capacities of the Recharge device including: specifications, features, hardware and firmware of the product described in this manual without prior notice.

©2013 by Techlink. All rights reserved. Techlink and Recharge marks are owned by Techlink and may be registered. All other marks are the property of their respective owners.

**TECHLINK , A Division Of Tapehand Ltd.**  
Units 7 and 8 Bat and Ball Enterprise Centre  
Bat and Ball Road  
Sevenoaks  
Kent  
United Kingdom  
TN14 5LJ



(UK) Free Phone 0800 634 2699  
(US) Toll Free (844) 499-1159



salesdesk@techlink.uk.com

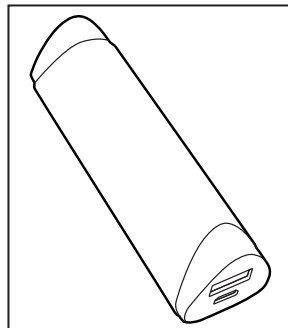


www.techlink.uk.com  
www.recharge.uk.com

Instructions

**TECHLINK™**

**Product Name: RECHARGE 2600**  
**Art number: 527011/12/13/14**



**Warranty information**

All Recharge devices are covered by a One (1) year warranty against the defects or fault from the date of the original purchase. Please retain your receipt as proof of purchase. This does not affect your statutory rights. The warranty does not cover:

- 1) misuse or abuse of this product,
- 2) operation outside of directed use or
- 3) unauthorized service or modification.

Please contact Techlink to obtain service, repair or refund under warranty.

**Legal**

The Recharge devices are certified to ETL, FCC, CE, RoHS, WEEE and MFi standards and regulations where required. Please contact Techlink for further information.

Every effort has been made to provide accurate and complete information in this manual, no liability will be made for errors and/or omissions made. Techlink reserves the right to make changes and improvement to all capacities of the Recharge device including: specifications, features, hardware and firmware of the product described in this manual without prior notice.

©2013 by Techlink. All rights reserved. Techlink and Recharge marks are owned by Techlink and may be registered. All other marks are the property of their respective owners.

**TECHLINK , A Division Of Tapehand Ltd.**  
Units 7 and 8 Bat and Ball Enterprise Centre  
Bat and Ball Road  
Sevenoaks  
Kent  
United Kingdom  
TN14 5LJ



**(UK) Free Phone 0800 634 2699**  
**(US) Toll Free (844) 499-1159**

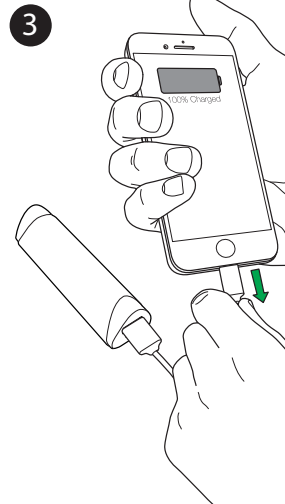
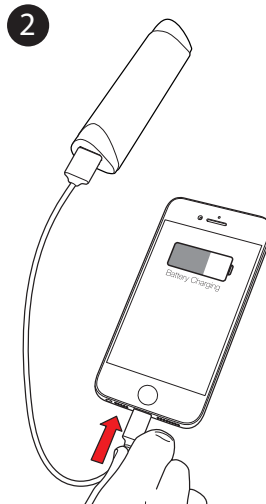
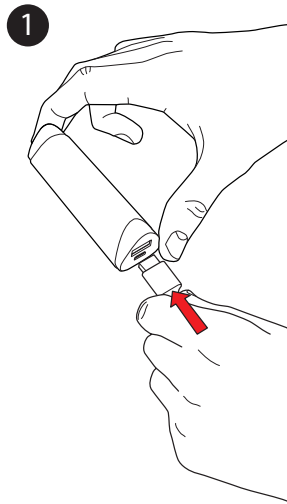


**salesdesk@techlink.uk.com**

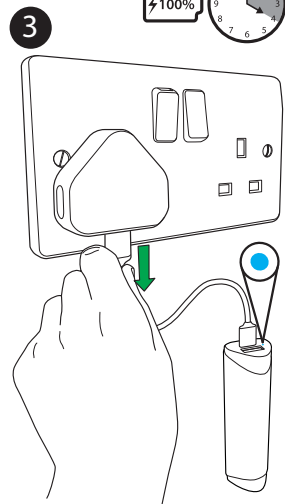
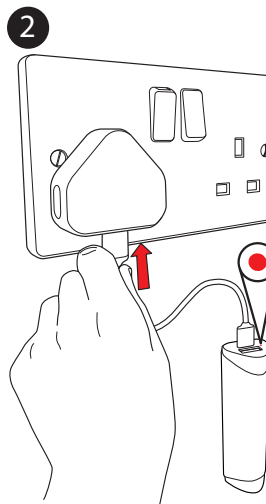
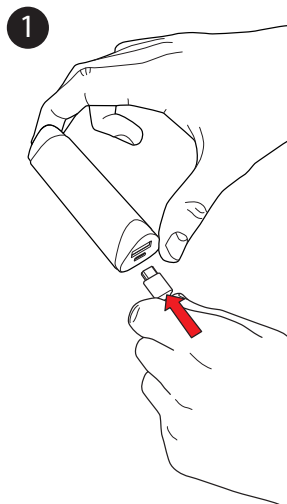


**www.techlink.uk.com**  
**www.recharge.uk.com**

**Recharge your device**



**Recharge the Recharge (UK)**

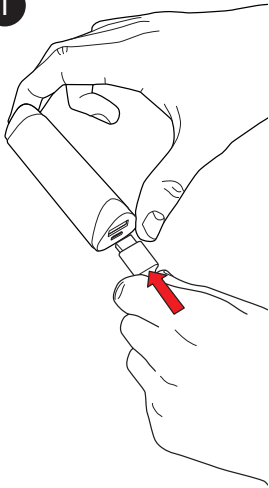


Instructions

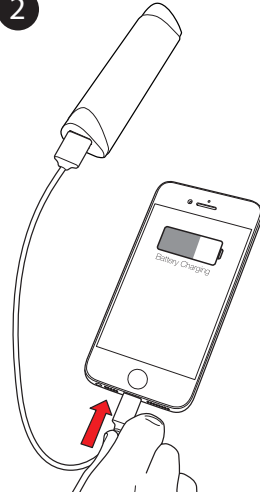


## Recharge your device

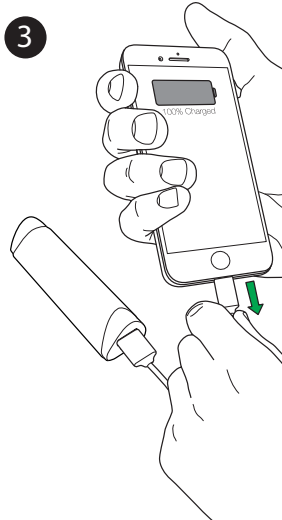
1



2

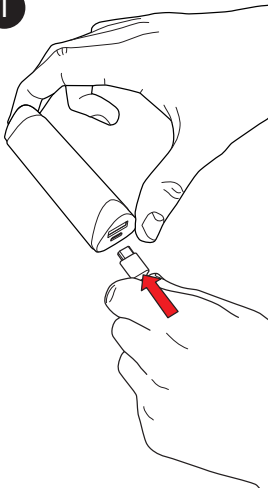


3

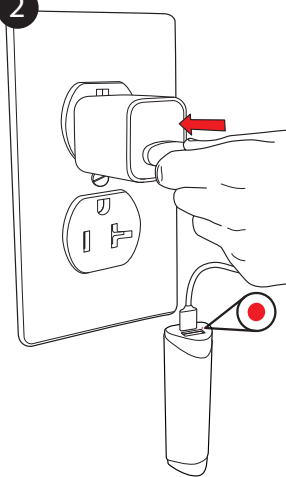


## Recharge the Recharge (USA)

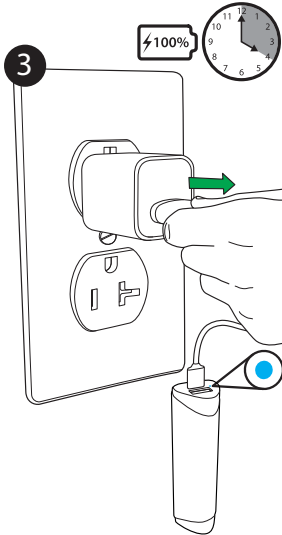
1



2



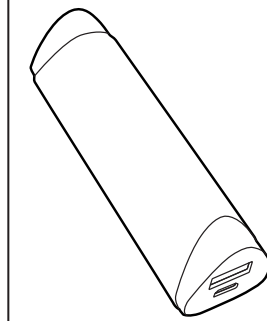
3



**TECHLINK™**

Product Name: RECHARGE 2600

Art number: 527011/12/13/14



### Warranty information

All Recharge devices are covered by a One (1) year warranty against the defects or fault from the date of the original purchase. Please retain your receipt as proof of purchase. This does not affect your statutory rights. The warranty does not cover :

- 1) misuse or abuse of this product,
  - 2) operation outside of directed use or
  - 3) unauthorized service or modification.
- Please contact Techlink to obtain service, repair or refund under warranty.

### Legal

The Recharge devices are certified to ETL, FCC, CE, RoHS, WEEE and MFi standards and regulations where required. Please contact Techlink for further information.

Every effort has been made to provide accurate and complete information in this manual, no liability will be made for errors and/or omissions made. Techlink reserves the right to make changes and improvement to all capacities of the Recharge device including: specifications, features, hardware and firmware of the product described in this manual without prior notice.

©2013 by Techlink. All rights reserved. Techlink and Recharge marks are owned by Techlink and may be registered. All other marks are the property of their respective owners.

**TECHLINK , A Division Of Tapehand Ltd.**  
Units 7 and 8 Bat and Ball Enterprise Centre  
Bat and Ball Road  
Sevenoaks  
Kent  
United Kingdom  
TN14 5LJ



(UK) Free Phone 0800 634 2699

(US) Toll Free (844) 499-1159



salesdesk@techlink.uk.com



www.techlink.uk.com  
www.recharge.uk.com

Instructions